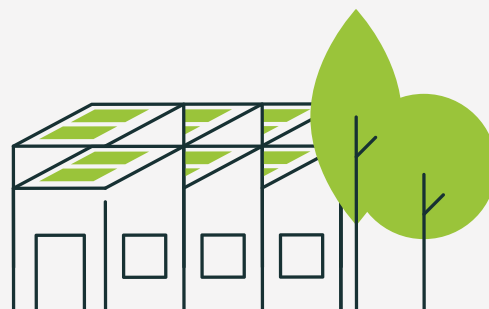


E/Xpand 16

Rack-mount battery for commercial and industrial applications.



HIGH DENSITY

High energy-density system with high capacity and high efficiency LFP technology.



COMPACT DESIGN

Standard 19" rack design with multiple configurations for easy integration into container solutions.



EASY INSTALLATION

Plug & play installation with quick and safe connectors that reduce installation times.



MAXIMUM PERFORMANCE

Smart control with a string management system for optimal performance.



MAXIMUM SAFETY

LFP technology with smart BMS and automatic pre-charging system for optimal protection.



THERMAL EFFICIENCY

Modules with air cooling to optimise system cycles.



MINIMUM INSTALLATION

7 modules
Energy: 113 kWh



| | MINIMUM STRING | MAXIMUM STRING |
|----------------|----------------|----------------|
| | 7x | 18x |
| | + control unit | + control unit |
| Energy: | 113 kWh | 289 kWh |
| Rated voltage: | 358 V | 922 V |

| | 7 | 8 | 9 | 10 | 11 | 12 |
|------------------------------|--------------|---------------|---------------|---------------|---------------|---------------|
| MODULES | 7 | 8 | 9 | 10 | 11 | 12 |
| Energy (kWh) | 113 | 129 | 145 | 161 | 177 | 193 |
| Usable energy (kWh, 90% DoD) | 101 | 116 | 130 | 145 | 156 | 174 |
| Rated voltage (V) | 358 | 410 | 461 | 512 | 563 | 613 |
| Voltage range (V) | 325–386 | 371–442 | 418–497 | 464–552 | 510–607 | 557–662 |
| Recommended current (A) | 157 | | | | | |
| Maximum current (A)* | 220 | | | | | |
| Peak current (A) (<1 min)* | 314 | | | | | |
| Rated power (kW) | 81 | 93 | 105 | 116 | 128 | 140 |
| Dimensions (mm) | 550x832x2150 | 1100x832x1640 | 1100x832x1640 | 1100x832x1640 | 1100x832x1640 | 1100x832x2150 |
| Weight (kg) | 991 | 1174 | 1297 | 1420 | 1543 | 1686 |

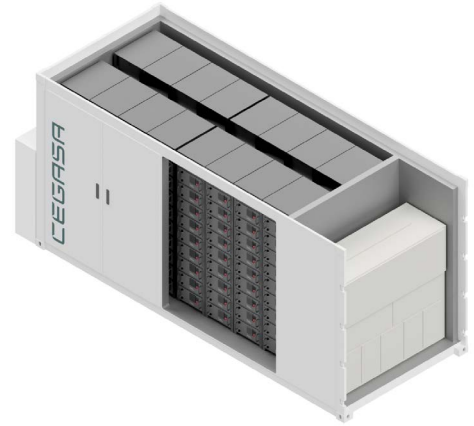
| | 13 | 14 | 15 | 16 | 17 | 18 |
|------------------------------|---------------|---------------|---------------|---------------|---------------|---------------|
| MODULES | 13 | 14 | 15 | 16 | 17 | 18 |
| Energy (kWh) | 209 | 225 | 241 | 257 | 273 | 289 |
| Usable energy (kWh, 90% DoD) | 188 | 203 | 217 | 232 | 246 | 260 |
| Rated voltage (V) | 666 | 717 | 768 | 819 | 870 | 922 |
| Voltage range (V) | 603–718 | 650–773 | 696–828 | 742–883 | 789–938 | 835–993 |
| Recommended current (A) | 157 | | | | | |
| Maximum current (A)* | 200 | | | | | |
| Peak current (A) (<1 min)* | 350 | | | | | |
| Rated power (kW) | 151 | 163 | 175 | 186 | 198 | 210 |
| Dimensions (mm) | 1100x832x2150 | 1100x832x2150 | 1100x832x2150 | 1650x832x1640 | 1650x832x1640 | 1650x832x2150 |
| Weight (kg) | 1809 | 1962 | 2095 | 2238 | 2361 | 2514 |

GENERAL

| | |
|------------------------|---|
| Cycles [1] | > 6000 |
| Operating temp (°C) | From 0 to 60 |
| Protection rating | IP30 |
| Efficiency [1] | > 98% |
| DoD max. | 90% (configurable) |
| Communications | CAN, Modbus TCP/IP (Sunspec) |
| Certifications | CE / IEC62619 / IEC62620 / EN61000-6-2 / EN61000-6-3 / UN38.3 |
| IEC 62620 Nomenclature | IFpP73/176/209[1p16s]M/0+50/90 |

[1] Test conditions: 0.2C / 25°C / 90% DoD | *Derating may be applicable due to temperature and voltage

SPECIFIC SOLUTIONS (BESS).



NORMAL HEIGHT
Height: 2150 mm

HIGH CUBE
Height: 2405 mm



| MODULES | 15 | 17 |
|------------------------------|---------------|---------------|
| Energy (kWh) | 241 | 273 |
| Usable energy (kWh, 90% DoD) | 217 | 246 |
| Rated voltage (V) | 768 | 870 |
| Voltage range (V) | 696–828 | 789–938 |
| Recommended current (A) | | 157 |
| Maximum current (A)* | | 220 |
| Peak current (A) (<1 min)* | | 314 |
| Rated power (kW) | 175 | 198 |
| Dimensions (mm) | 1100x832x2150 | 1100x832x2405 |
| Weight (kg) | 2095 | 2241 |

| GENERAL | |
|------------------------|---|
| Cycles [1] | > 6000 |
| Operating temp (°C) | From -5 to 45 |
| Protection rating | IP30 |
| Efficiency [1] | > 98% |
| DoD max. | 90% (configurable) |
| Communications | CAN, Modbus TCP/IP (Sunspec) |
| Certifications | CE / IEC62619 / IEC62620 / EN61000-6-2 / EN61000-6-3 / UN38.3 |
| IEC 62620 Nomenclature | IFpP73/176/209[1p16s]M/0+50/90 |

[1] Test conditions: 0.2C / 25°C / 90% DoD | *Derating may be applicable due to temperature and voltage